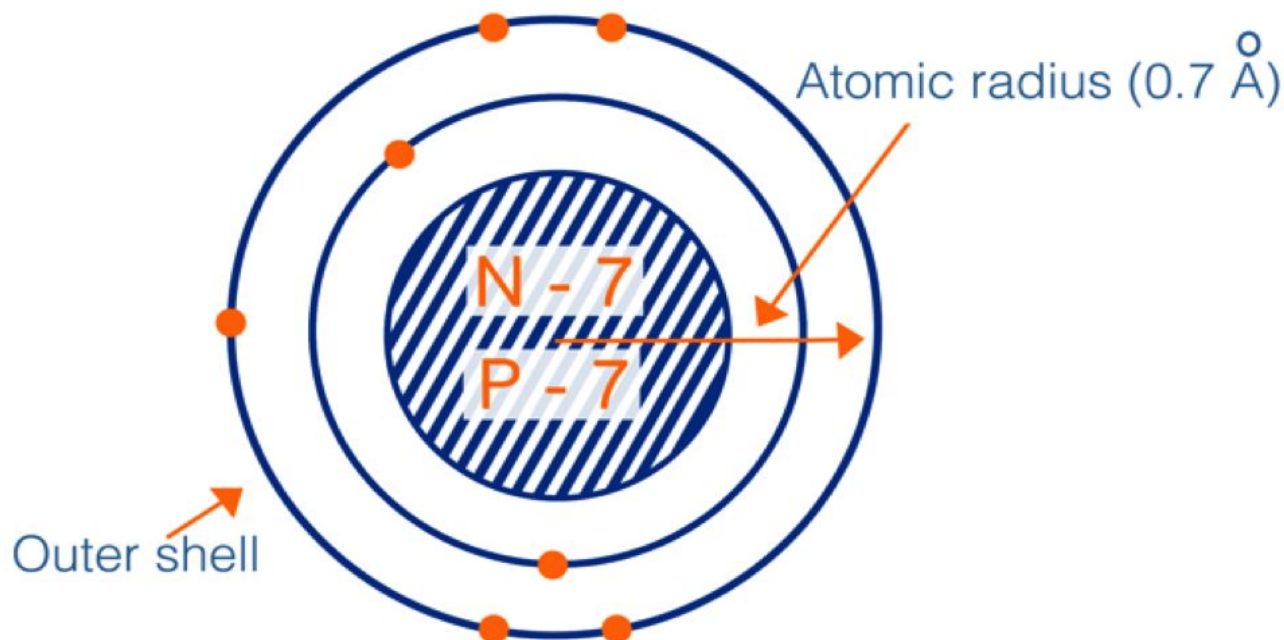


Electron Patterns and Properties of Elements

Picture Vocabulary

C1F Electron Patterns and Properties of Elements

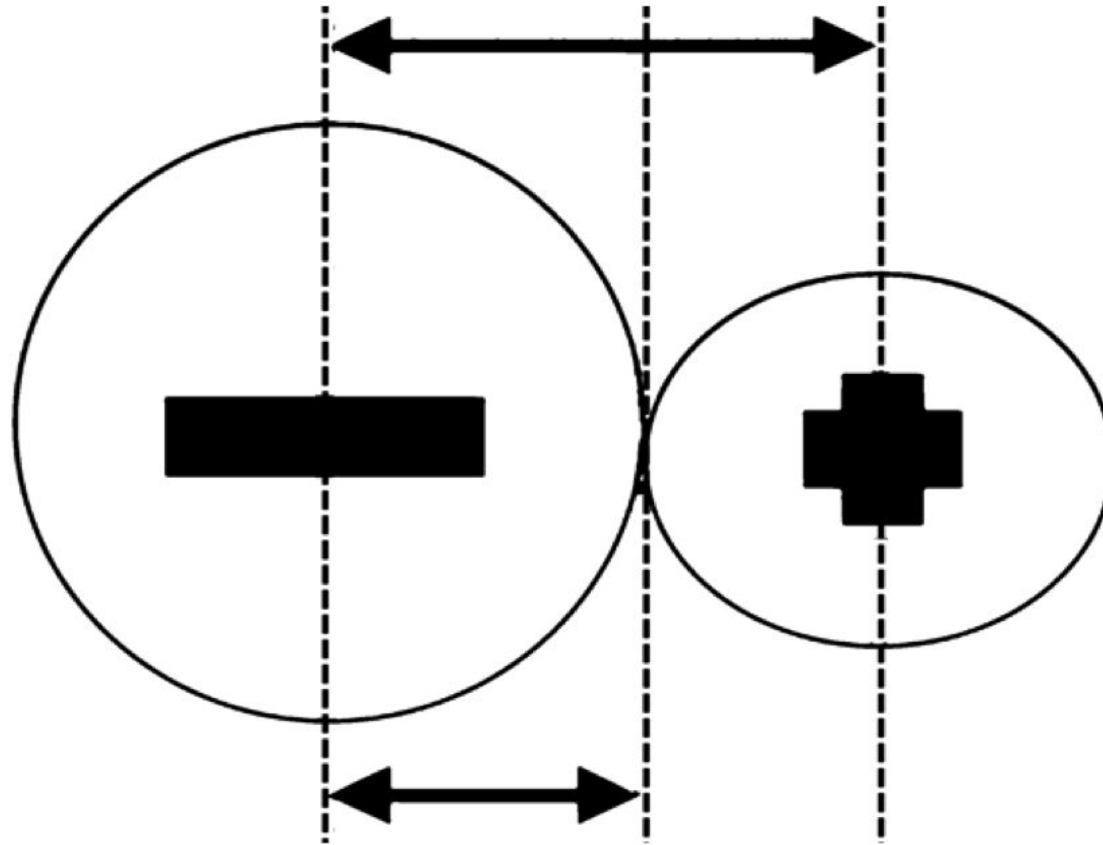
Atomic radii



Atomic radius of Nitrogen atom is 0.70 Å

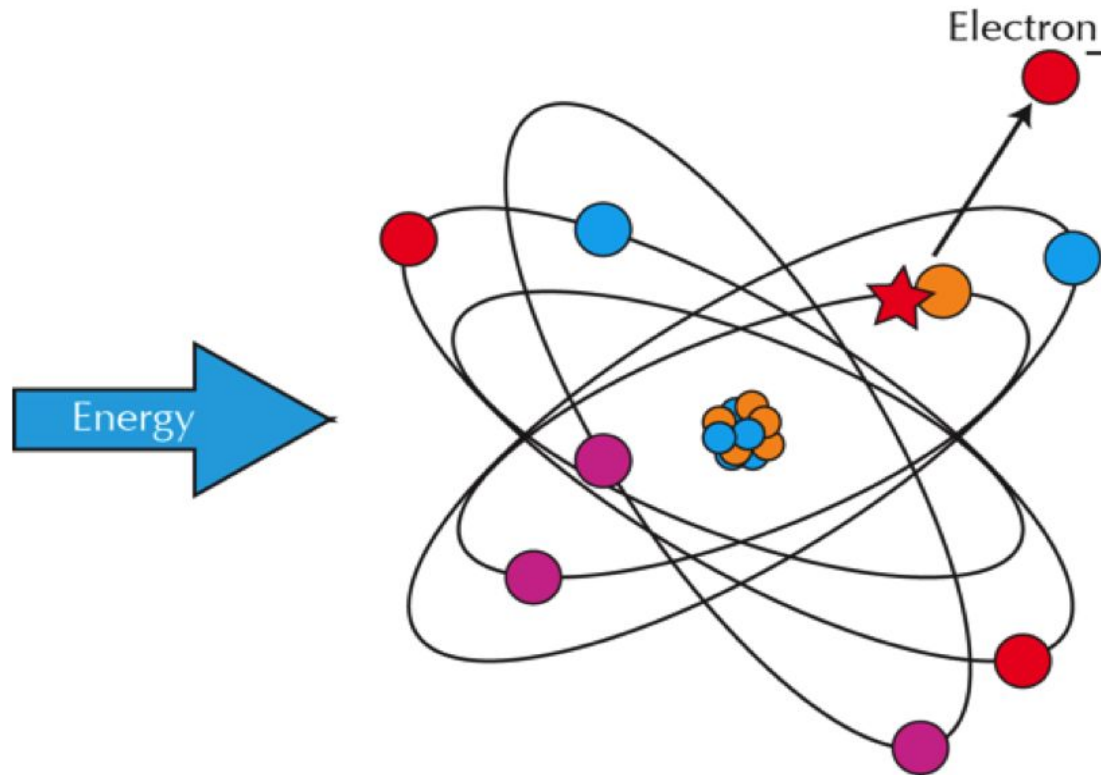
The distance between the nucleus of an atom to the outermost electron orbital, usually measured in nanometers

Ionic radii



The radius of either a positive or a negative ion found in an ionic crystal

Ionization



The process of converting an atom or molecule into an ion by adding or removing charged particles

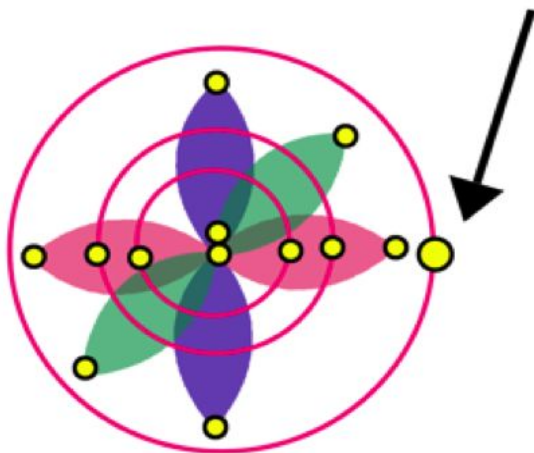
Energy



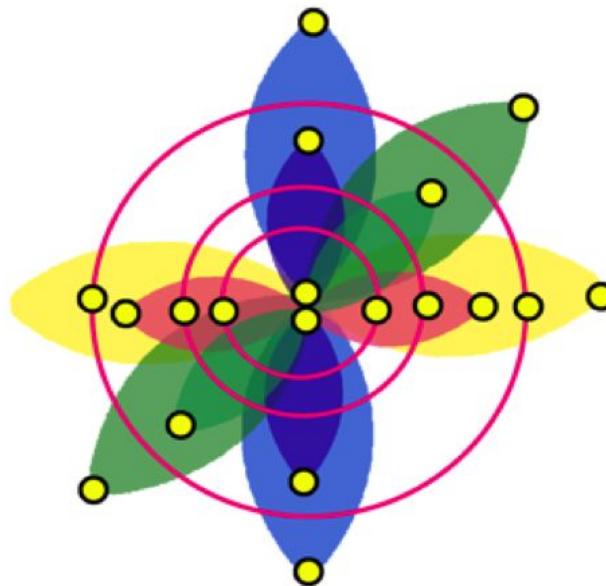
The ability of a system to do work or produce heat

Electronegativity

Sodium

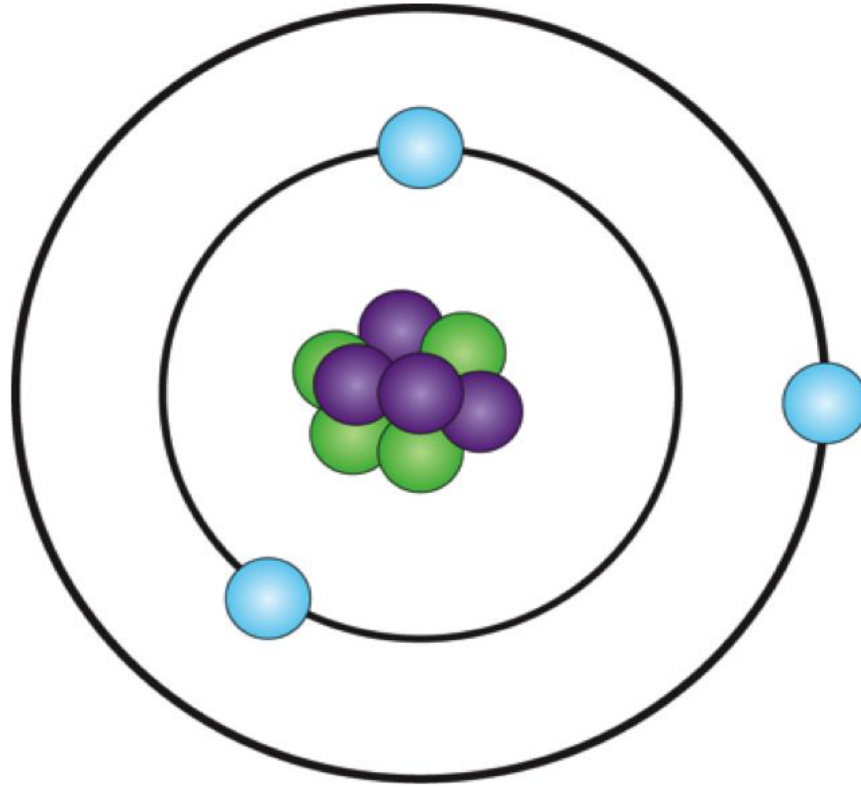


Chlorine



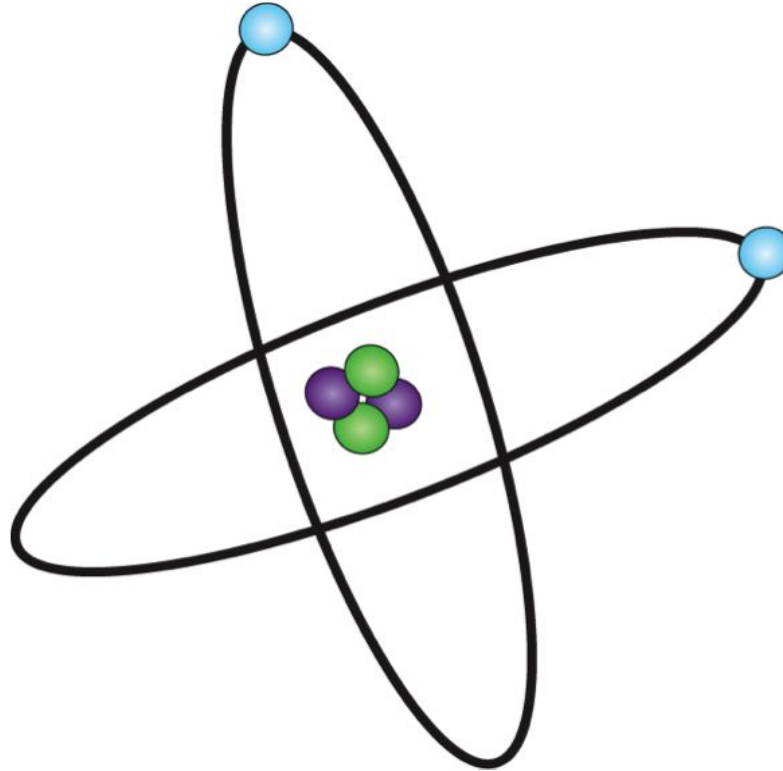
Within a molecule, it is the ability of an atom in that molecule to attract electron pairs to itself.

Ion



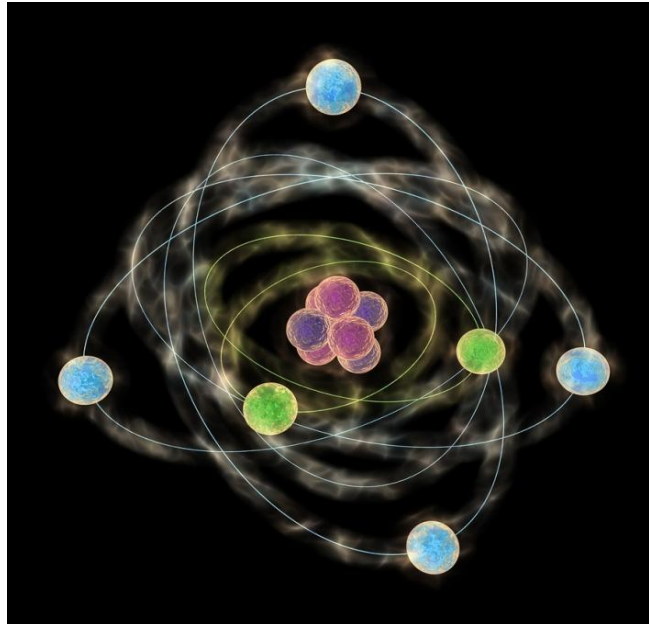
Atoms (or groups of atoms) that have an electrical charge due to a different number of protons and electrons

Neutral



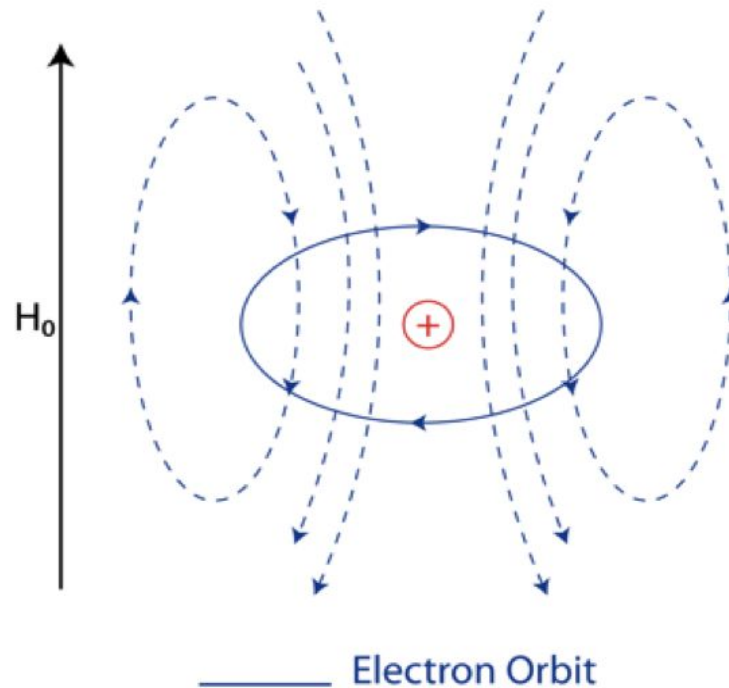
Having no electrical charge

Energy level



Regions around the nucleus of an atom
where electrons may be found

Shielding effect



An effect that occurs as the inner electron shells of an atom “shield” the valence electrons in the outer electron shells from the positive pull of the nucleus

Periodicity



The quality or state of being periodic,
or occurring at regular intervals

Cation



Any atom or group of atoms with a positive charge

Anion



Any atom or group of atoms with a negative charge